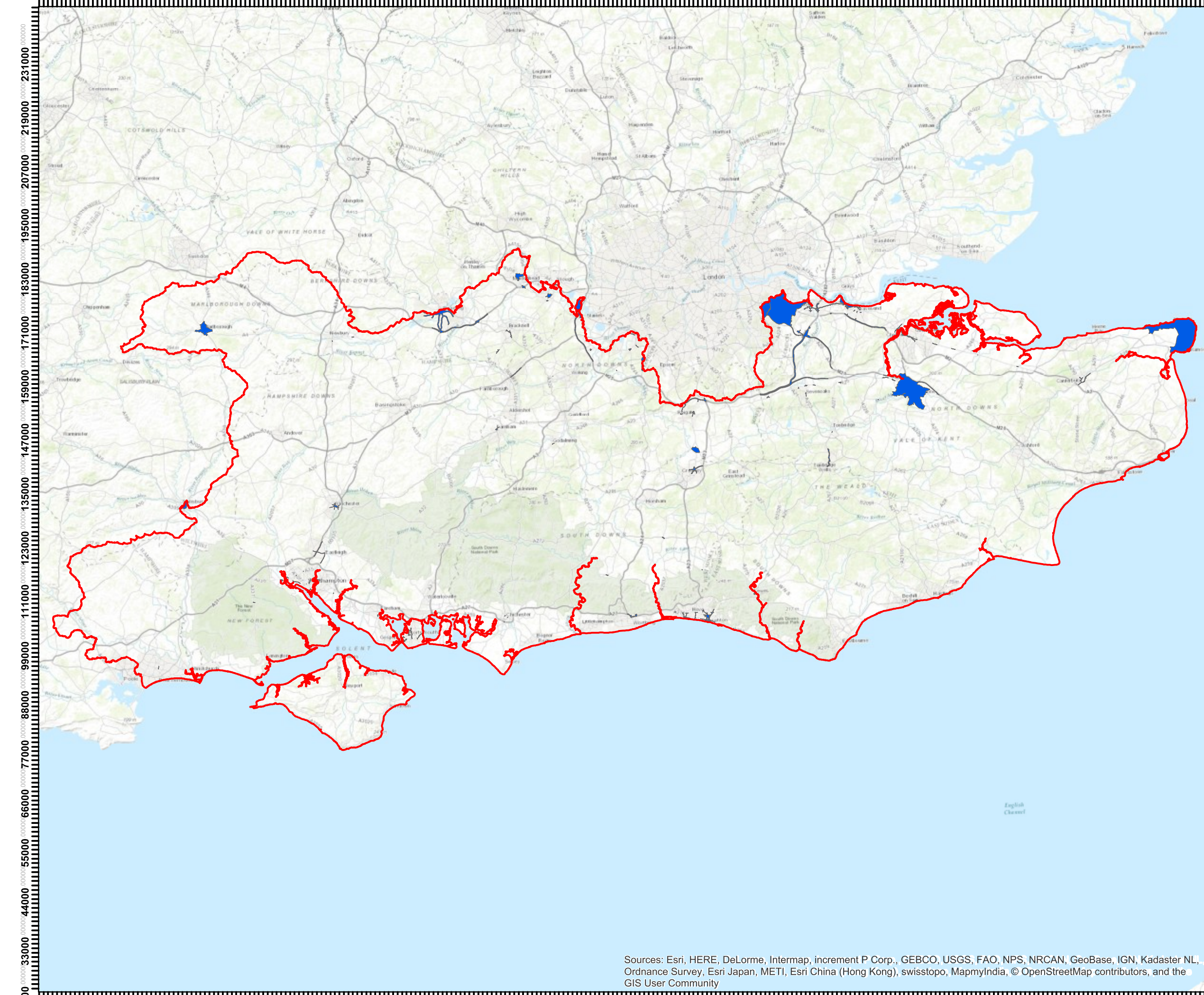


382000 394000 406000 418000 430000 442000 454000 466000 478000 490000 502000 514000 526000 538000 550000 562000 574000 586000 598000 610000 622000 634000



### Legend

- Study Area (onshore)
- Air Quality Management Areas



N  
 1:800,000  
 Note: All locations are approximate  
 This drawing incorporates Ordnance Survey Information  
 © Crown copyright and database rights 2016  
 Internal project reference: Q:\Delivery\Projects\Cascade\ED62546 SWS WRMP19&DP18\5. Data Management\1. GIS\02\_GIS\_Task\Drought Plan\03\_SEA\_ERIMxd

Project Title: Southern Water Drought Plan Strategic Environmental Assessment

Figure Title: Air Quality Management Areas

Figure Number: Figure C8	Date: January 2017
-----------------------------	-----------------------

Sources: Esri, HERE, DeLorme, Intermap, increment P Corp., GEBCO, USGS, FAO, NPS, NRCAN, GeoBase, IGN, Kadaster NL, Ordnance Survey, Esri Japan, METI, Esri China (Hong Kong), swisstopo, MapmyIndia, © OpenStreetMap contributors, and the GIS User Community

22000

33000  
34000  
44000  
55000  
66000  
77000  
88000  
99000

111000  
123000  
135000  
147000  
159000  
171000  
183000  
195000  
207000  
219000  
231000