

Drainage and Wastewater Management Plans (DWMPs)

Workshop on the East Hampshire DWMP

7 September 2020



from
**Southern
Water** 

Agenda

- Objectives of the workshop
- Presentation: Drainage & wastewater management in the East Hampshire river basin
- Discussion 1: Exploring the Risk Based Catchment Screening
- **BREAK**
- Presentation: Planning Objectives
- Discussion 2: Defining the objectives for this river basin catchment
- Next steps

Objectives of the Workshop

- To start working together to develop the DWMP
- To understand the results from the **risk based catchment screening** (RBCS)
- To identify any other issues or concerns in the catchment
- To agree the planning objectives for the DWMP
- To identify any other metrics or indicators of risk that need to be included in the **baseline risk and vulnerability assessment** (BRAVA).

Presentation 1

Drainage and Wastewater Management in
the East Hampshire river basin catchment

Ryan O'Sullivan

Wastewater Catchment Strategy Manager

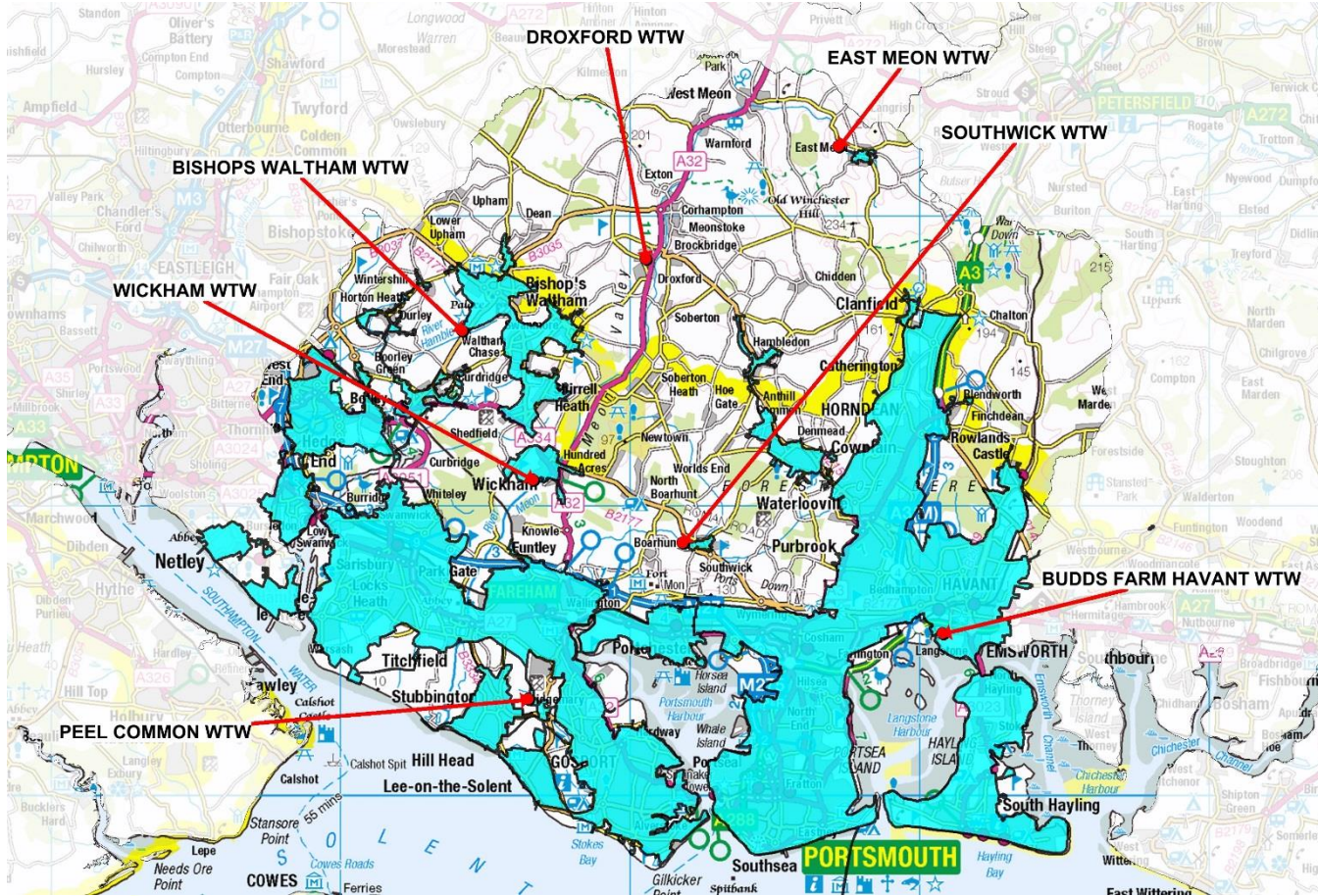


Objectives for this session

- To develop a high level understanding of the drainage and wastewater systems in this catchment
- To understand the Risk Based Catchment Screening (RBCS) process
- To enable you to analyse and discuss the results for this catchment in the break-out session that follows this presentation



East Hampshire River Basin Catchment

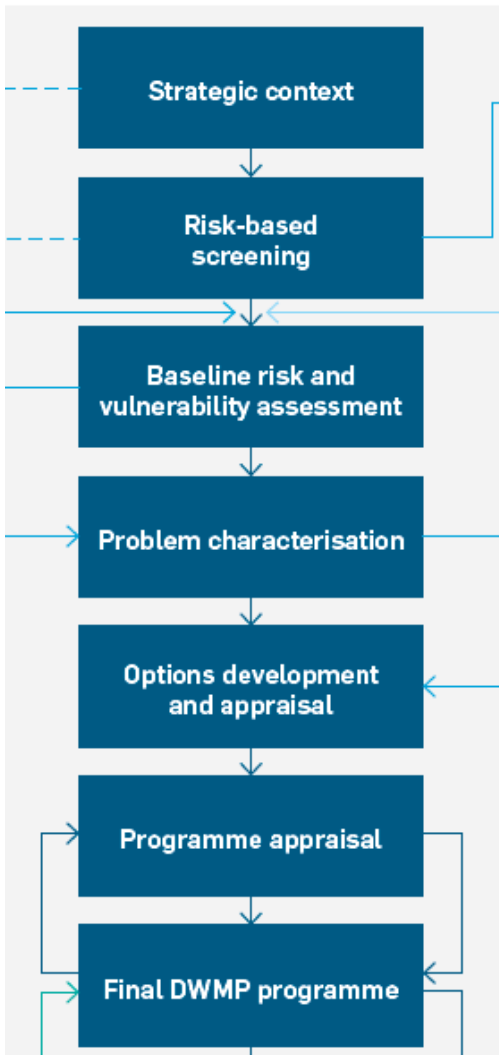


- 7 sewer catchments
- 7 WTWs
- 280 WPS
- 5,826km sewers
- 31% area
- 98% homes connected



Risk Based Catchment Screening (RBCS)

- Second step in the DWMP process
- Identifies where there is potential “system vulnerability” to future changes (i.e. risks that need to be investigated during the DWMP)
- Screening process for all 7 sewer catchments
- 18 metrics: 17 specified by Water UK, and we’ve added one additional one on customer complaints



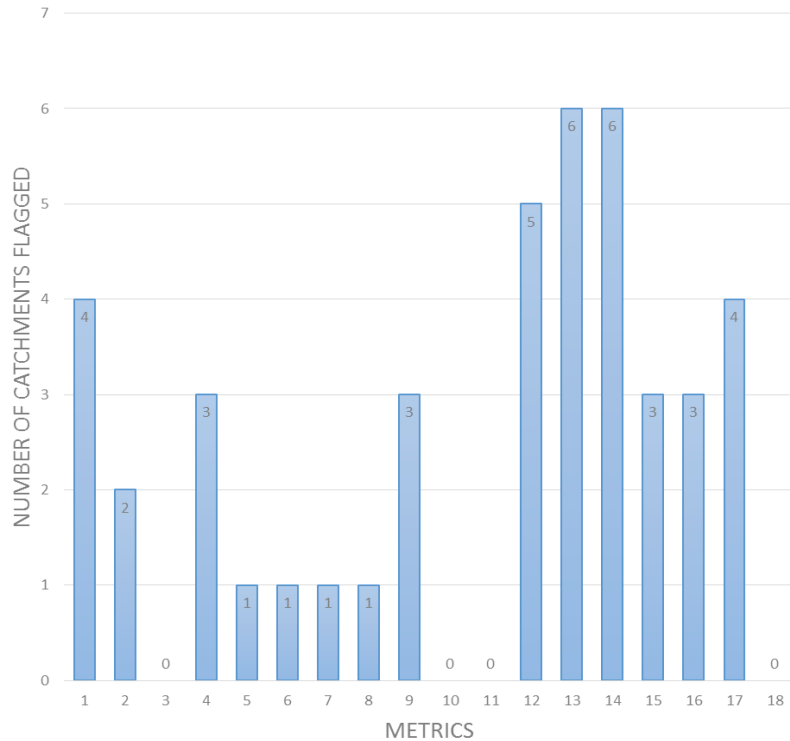
Risk Based Catchment Screening - Results

	<i>Catchment Characterisation</i>	<i>Intermittent Discharge</i>	<i>Discharge to Sensitive Waters (part A)</i>	<i>Discharge to Sensitive Waters (part B)</i>	<i>Storm Overflow Assessment Framework (SOAF)</i>	<i>Capacity Assessment Framework (CAF)</i>	<i>Internal Flooding (from sewers inside properties)</i>	<i>External Flooding (from sewers within curtilage but not internal)</i>	<i>Risk of Pollution Incidents (Cat 1 -3)</i>	<i>Risk of WwTW Quality non-Compliance</i>	<i>Risk of WwTW DWF non-Compliance (Dry Weather Flow)</i>	<i>Storm Overflows</i>	<i>Other Risk Management Authority Systems</i>	<i>Planned Residential Development</i>	<i>Environmental Programme (WINEP)</i>	<i>Sewer Collapses</i>	<i>Sewer Blockages</i>	<i>Customer Complaints</i>	
	Tier 2	Tier 1	Tier 1	Tier 2	Tier 1	Tier 1	Tier 1	Tier 1	Tier 1	Tier 1	Tier 1	Tier 1	Tier 1	Tier 1	Tier 1	Tier 1	Tier 1	Tier 2	
Sewer Catchment Name	1	2	3	4	5	6	7	8	9	10	11	12	13	14	15	16	17	18	Proceed to BRAVA?
BUDDS FARM HAVANT	Blue	Blue	Yellow	Blue	Yellow	Blue	Blue	Yellow	Blue	Yellow	Yellow	Blue	Blue	Blue	Yellow	Yellow	Yellow	Yellow	YES
PEEL COMMON	Blue	Blue	Yellow	Blue	Yellow	Yellow	Yellow	Blue	Yellow	Yellow	Yellow	Blue	Blue	Blue	Blue	Blue	Yellow	Yellow	YES
BISHOPS WALTHAM	Blue	Yellow	Yellow	Blue	Yellow	Yellow	Yellow	Blue	Yellow	Yellow	Yellow	Blue	Blue	Blue	Blue	Blue	Yellow	Yellow	YES
WICKHAM	Blue	Yellow	Yellow	Yellow	Blue	Yellow	Yellow	Yellow	Yellow	Yellow	Yellow	Blue	Blue	Blue	Blue	Blue	Blue	Yellow	YES
EAST MEON	Blue	Yellow	Yellow	Yellow	Yellow	Yellow	Blue	Yellow	Yellow	Yellow	Yellow	Blue	Blue	Blue	Blue	Blue	Blue	Yellow	YES
SOUTHWICK	Yellow	Yellow	Yellow	Yellow	Yellow	Yellow	Yellow	Yellow	Yellow	Yellow	Yellow	Blue	Blue	Blue	Blue	Blue	Blue	Yellow	YES
DROXFORD	Yellow	Yellow	Yellow	Yellow	Yellow	Yellow	Yellow	Yellow	Yellow	Yellow	Yellow	Yellow	Blue	Blue	Blue	Blue	Blue	Yellow	NO
7																			6

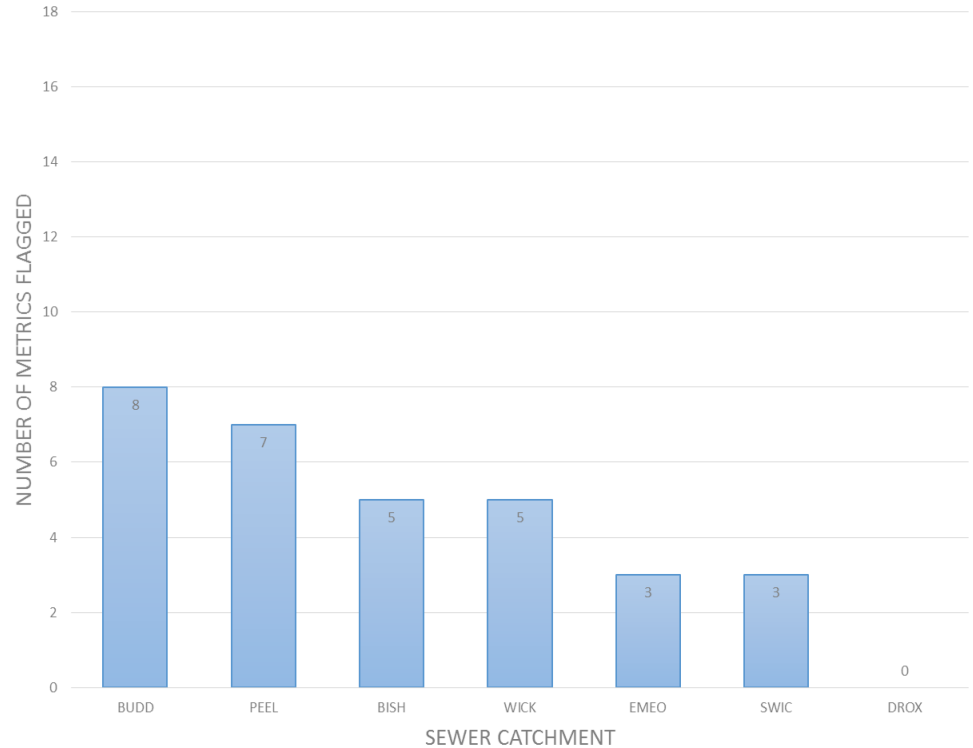


Risk Based Catchment Screening

Number of catchments flagged per metric



Metrics flagged per Catchment (excluding Sewer Collapses and Blockages)



Discussion 1

Discussing the results of the RBCS

Session 1: Risk Based Catchment Screening (RBCS)

Questions:

- Based on the results, what are your main concerns in this river basin catchment?
- What other issues or concerns do you have in this river basin catchment?
- Are all the sewer catchments (where you have the most concerns) flagged to progress to BRAVA?
- For any other concerns identified, what data could be used to assess the scale of the issue now and in the future?



Presentation 2

Planning Objectives for the DWMP

Ryan O'Sullivan

Wastewater Catchment Strategy Manager

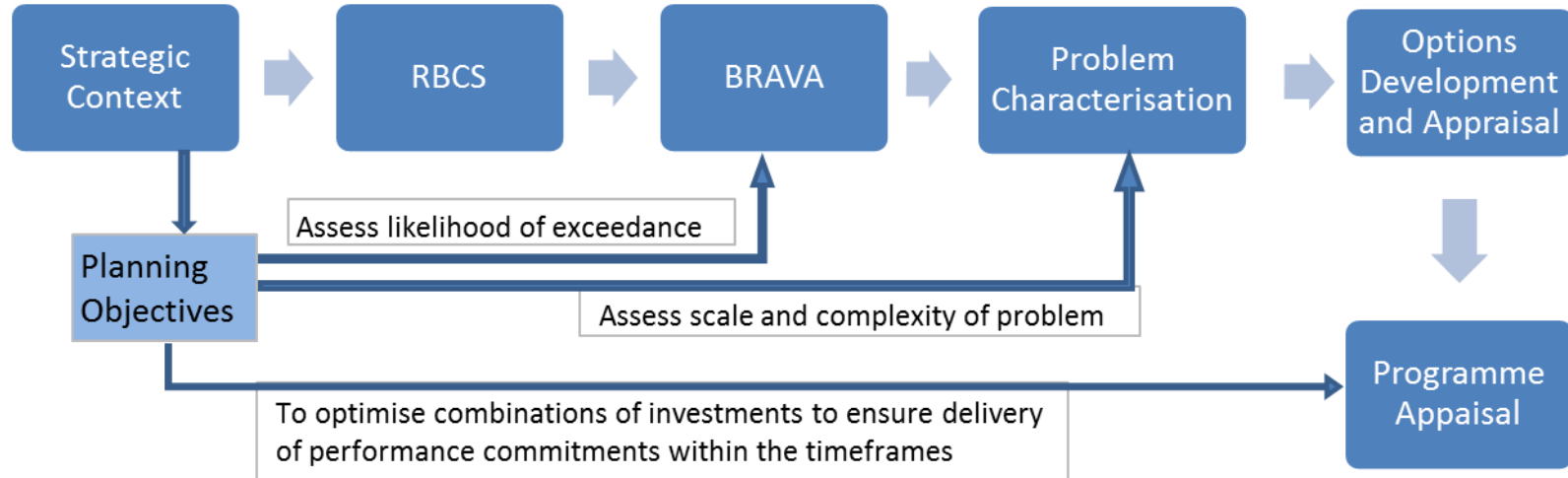


Objectives for this session

- To understand why we need planning objectives and how they will be used
- To know what planning objectives have been specified by Water UK for all companies to report
- To facilitate discussion on any additional planning objectives that may be needed for the East Hampshire catchment



Planning Objectives



Planning Objectives

- Water UK requires all water companies to report on the following 6 planning objectives:
 1. Risk of sewer flooding in a 1 in 50-year storm
 2. Storm overflow performance
 3. Risk of WTW compliance failure
 4. Internal sewer flooding risk
 5. Pollution risk
 6. Sewer collapse risk
- What is missing? Are any additional planning objectives needed for this river basin catchment?



Planning Objectives – methodology for BRAVA

- Water UK sets out how each of the 6 planning objectives needs to measure and report on risk in 2020, and for 2050 (where required)
- Describes how risks will be assessed in BRAVA stage
- Additional planning objectives – need to consider how to measure the risks now, and for future planning horizons
 - What data is available? Coverage, ownership, format, accessibility?
 - Can we assess the likelihood of occurrence in the future, and consequence?
 - Can the outcomes be influenced by us, or other risk management organisations?
- Next step to develop BRAVA methodology for each planning objective



Discussion 2

Identifying planning objectives

Session 2: Planning Objectives

Questions:

Based on the RBCS results from breakout 1, all groups to discuss:

- Are all your areas of concern / issues covered by the 6 national planning objectives?
- If not, then what gaps need to be filled with additional planning objectives?
- What additional indicators, metrics or data could we use to measure the current and future risks for any additional planning objectives?



Next Steps

Timetable

Dates	Activity
To Nov 2020:	Working with partner organisations to develop the strategic context, planning objectives and baseline risk and vulnerability assessment (BRAVA)
Dec 2020	Submission of BRAVA to Water UK
Jan – Sep 2021	Working with partners on options development and appraisal
Autumn 2021	Start early consultation with customers on the catchment based DWMPs (Level 2)
Summer 2022:	Public consultation on the regional DWMP
January 2023	Publish final DWMPs

Thank you for participating today

Contact us: DWMP@southernwater.co.uk

